

Wall Mounted Touch Panel

Discover advanced lighting control with our DMX512 Touch Panel Controller, a versatile solution designed for managing up to four independent zones. This controller supports both single and dual-colour modes (WW/CW), RGB, RGBW or RGB+CCT and interfaces seamlessly with standard DMX512 protocol, ensuring compatibility with various DMX decoders. It features an ultra-sensitive glass touch panel for precise colour tuning, RF remote capabilities for extended control, and is available in elegant white or black glass finishes. Certified with CE and RoHS, it comes with a robust 5-year warranty, making it a reliable choice for sophisticated lighting setups.

FEATURES AND BENEFITS:

- ✓ Multi-Zone Control
- ✓ Flexible Colour Options
- ✓ DMX512 Compatibility
- ✓ RF Remote Functionality
- ✓ Touch-Sensitive Interface
- ✓ 5 years warranty

APPLICATION:

- ❖ Commercial Venues
- ❖ Retail Spaces
- ❖ Residential Complexes
- ❖ Event Production
- ❖ Architectural Lighting



DATASHEET:

| | |
|----------------------------------|------------------------------------------------|
| Product Code | ACNT006 |
| Light type | Single colour, Dual colour, RGB, RGBW, RGB+CCT |
| Voltage | 100-240CAC |
| Output DMX channel number | 20 |
| Input current | Max. 0.1A |
| RF Control distance | 30m (Barrier-free space) |
| Dimming level | 256 levels |
| Dimming range | 0-100% |
| Operation temperature | -30°C ~ 55°C |
| IP rating | IP20 |
| Finish | White/Black |
| Warranty | 5 Years |



KEY FUNCTIONS:

- Each zone can match single color, dual color(WW/CW), RGB, RGBW or RGB+CCT(WW/CW) controller or lamp.
- Touch power key to turn on light, turn off light, then immediately long press power key 5 seconds, enter zone light setting.
- Long press Zone 1/2/3/4 key 2 seconds, select the current zone you want to change, then long press the below five keys 2 seconds to change the current zone light type.



Long press 2 seconds, set current zone as single-colour type



Long press 2 seconds, set current zone as dual colour type.



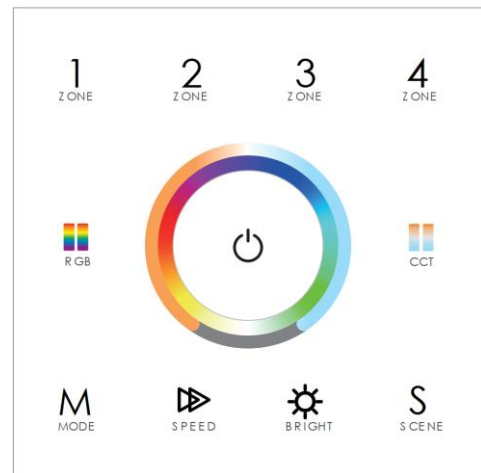
Long press 2 seconds, set current zone as RGB colour type.



Long press 2 seconds, set current zone as RGBW type.



Long press 2 seconds, set current zone as RGB+CCT type.



If you want to change zone 1 light type to RGB type, please long press Zone 1 key 2 seconds first, then long press RGB icon for 2 seconds, this will set Zone 1 as RGB type.



Turn on/off all zone light.



RGB color / Color temperature.

Press RGB or CCT key to switch between RGB wheel and CCT wheel



Allows to change CCT by using the wheel/circle



Allows to change RGB by using the wheel/circle



Short press play 10 built-in dynamic mode, long press 2s run mode-cycle.



For dynamic RGB mode, to adjust speed, short press 10 levels, long press 2s, get the default speed.

For static RGB color, adjust saturation, namely change the current static RGB color to mixed white slowly short press 11 levels, long press 1-6s for continuous 256 levels adjustment.



Adjust brightness, short press 10 levels, long press 1-6s for continuous 256 levels adjustment.



Short press replay scene. Long press 2s to save the current color into the scene. 4 zone recall or save synchronously

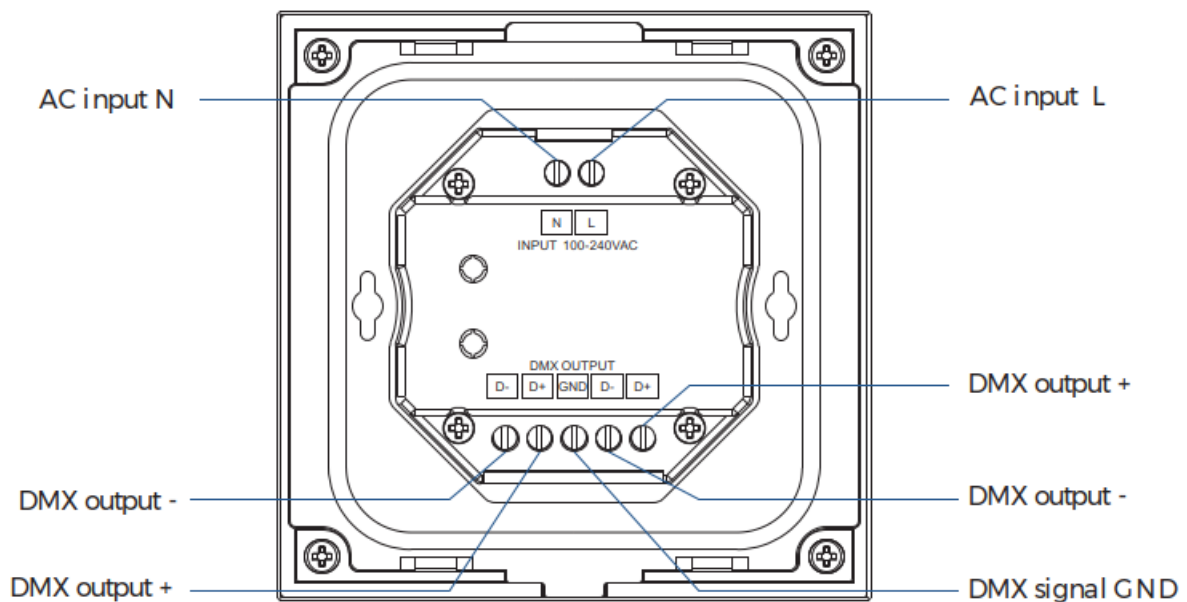
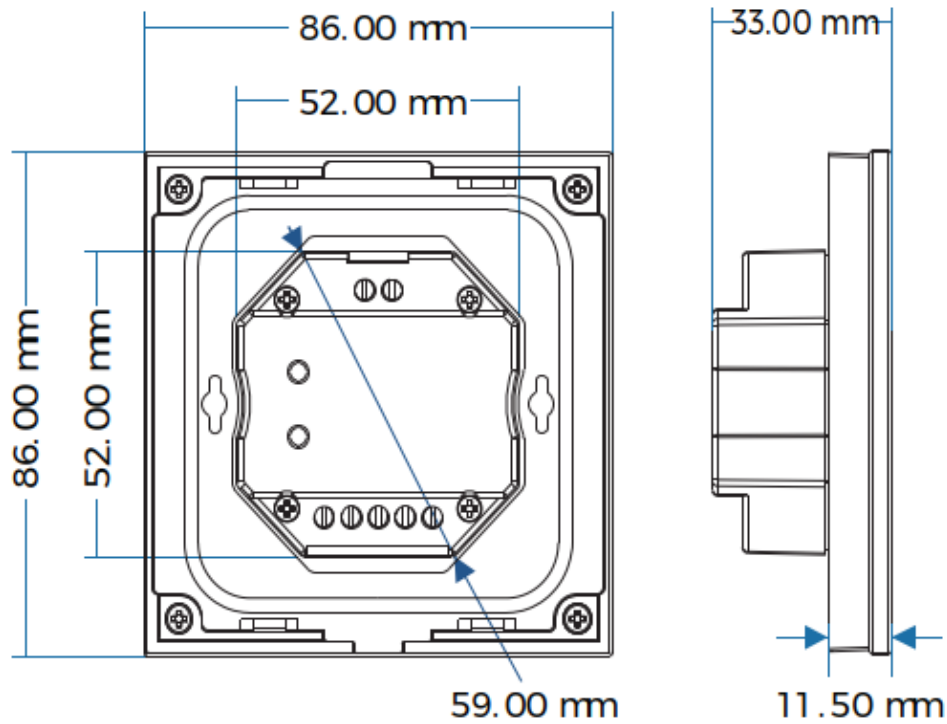


Short press to turn on zone light and select zone simultaneously. Long press 2s to turn off zone light. 4 zone can be control separately or synchronously, and each zone could be controlled by multiple receivers.

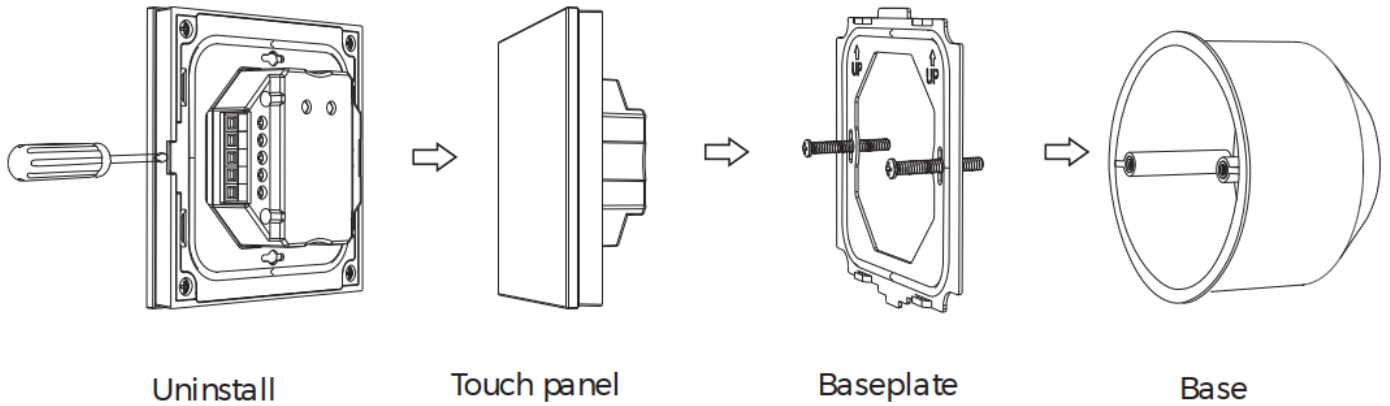
Note:

- For single color, touch RGB/CCT wheel only change brightness, RGB, MODE, SPEED key is invalid.
- For dual color, touch RGB/CCT wheel only change color temperature, RGB, MODE, SPEED key is invalid.
- For RGB, when touch CCT wheel, adjust color temperature by mix R/G/B channel.
- For RGBW, when touch CCT wheel, adjust W channel brightness.
- Turn on key tone: Long press power key 10s when all zone light is off, will turn on or turn off tone.

DIMENSIONS:

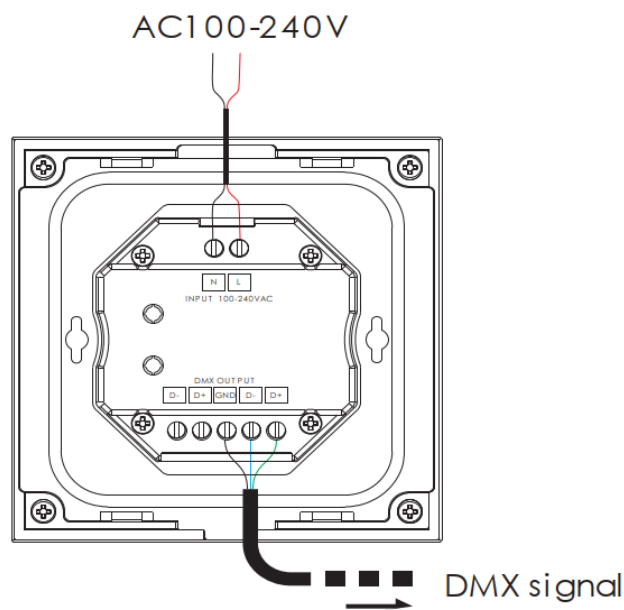


INSTALLATION:

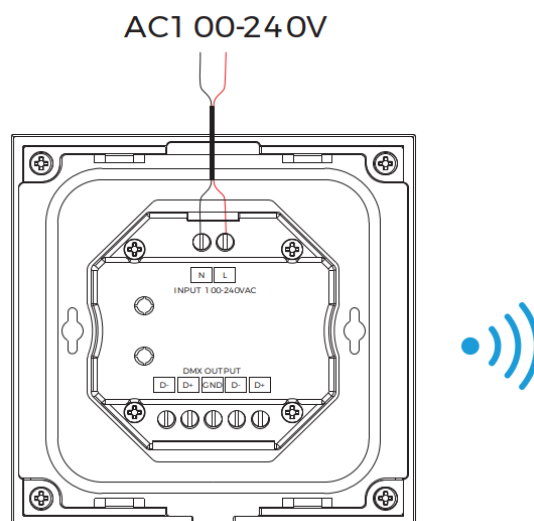


TOUCH PANEL AS DMX512 MASTER:

| Light Type | Light color channel | | | | | Zone 1 DMX address | Zone 2 DMX address | Zone 3 DMX address | Zone 4 DMX address |
|--------------|---------------------|----|----|----|----|-----------------------|-----------------------|-----------------------|-----------------------|
| Single color | W | W | W | W | W | 1-5 | 6-10 | 11 -15 | 16 - 20 |
| Dual color | WW | CW | WW | CW | 0 | 1-5 | 6-10 | 11 -15 | 16 - 20 |
| RGB | R | G | B | 0 | 0 | 1-5 | 6-10 | 11 -15 | 16 - 20 |
| RGBW | R | G | B | W | W | 1-5 | 6-10 | 11 -15 | 16 - 20 |
| RGB+CCT | R | G | B | WW | CW | 1-5 | 6-10 | 11 -15 | 16 - 20 |



WIRING DIAGRAM FOR TOUCH PANEL WORK AS RF REMOTE:



Touch panel 4 zone remote can match with RF controller for the corresponding light type. End user can choose the suitable match/delete ways. Two options are offered for selection:

| Operation | Use the controller's Match key | Use Power Restart |
|-----------|------------------------------------------------------------------------------------------------------------------------------------------------------------------------------------------------|--------------------------------------------------------------------------------------------------------------------------------------------------------------------------------------------------------------------------------------|
| Match | Short press match key, immediately press on/off key (single zone remote) or zone key (multiple zone remote) on the remote. The LED indicator fast flash a few times means match is successful. | Switch off the power, then switch on power again, immediately short press on/off key (single zone remote) or zone key (multiple zone remote) 3 times on the remote. The light blinks 3 times means match is successful. |
| Delete | Press and hold match key for 5s to delete all match, The LED indicator fast flash a few times means all matched remotes were deleted. | Switch off the power, then switch on power again, immediately short press on/off key (single zone remote) or zone key (multiple zone remote) 5 times on the remote. The light blinks 5 times means all matched remotes were deleted. |

DYNAMIC MODE LIST:

| NO. | Name | NO. | Name |
|-----|--------------------------|-----|-----------------------|
| 1 | RGB jump | 6 | RGB fade in and out |
| 2 | RGB smooth | 7 | Red fade in and out |
| 3 | 6 color jump | 8 | Green fade in and out |
| 4 | 6 color smooth | 9 | Blue fade in and out |
| 5 | Color temperature smooth | 10 | White fade in and out |

PRECAUTIONS:

- ✓ **Communication Range:** The panel allows for a communication distance of up to 30 meters. Placement near metals or strong signal sources like WiFi routers and microwave ovens can reduce this range. It's best suited for indoor use, and receiver placements should not exceed 15 meters apart to maintain optimal performance.
- ✓ **Remote Control Management:** To avoid interference, limit the number of panels controlled by one remote. Consider using power expanders to manage larger setups effectively.
- ✓ **Troubleshooting:** If the receiver does not respond, try re-matching the remote to restore functionality.
- ✓ **Handling Precautions:** Handle the remote with care to avoid damage from drops.
- ✓ **Usage Environment:** Designed exclusively for indoor and dry locations to ensure long-term reliability and safety.