

PR007 (Square Corner)

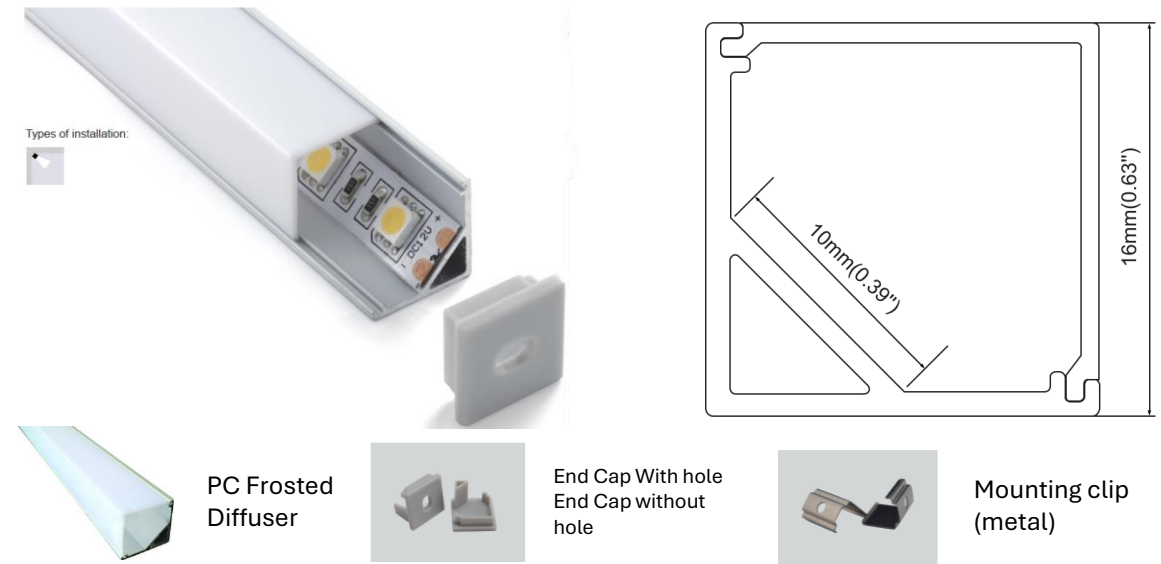
PR007 aluminium profile is a modern, versatile, and durable extrusion designed for corner-mounted LED lighting applications. With dimensions of 16mm x 16mm, it offers a compact yet functional design, ideal for highlighting edges and corners while blending seamlessly with contemporary interiors. Crafted from high-quality extruded aluminium, it ensures efficient heat dissipation and extends the life of your LED strips.

Applications:

- ✓ Architectural Lighting
- ✓ Retail Displays
- ✓ Residential Spaces
- ✓ Commercial Projects

Datasheet:

Product Code	PR007
Dimensions	16mm x 16mm
Installation	Surface Mounted
Material	Aluminium
Length	2m or Custom cut lengths up to 2m
Finish	Anodised Aluminium/ Custom Power coated
Diffuser Material	PC
Accessories	Metal Mounting clips (2 per meter) and a pair of endcaps included
Warranty	5 Years



INSTALLATION STEPS

