

PR006 (Surface Mounted)

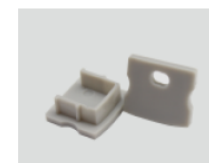
PR006 aluminum profile is a versatile, durable, compact extrusion designed for modern LED strip installations. With dimensions of 17.1mm x 15.3mm, this profile combines functionality and aesthetic appeal, making it perfect for clean, linear lighting in a variety of settings. Built from high-quality extruded aluminium, it ensures efficient heat dissipation and enhances the lifespan of your LED strips.

Applications:

- ✓ Architectural Lighting
- ✓ Retail Displays
- ✓ Residential Spaces
- ✓ Commercial Projects

Datasheet:

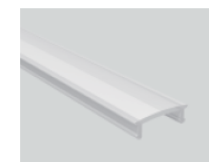
Product Code	PR006
Dimensions	17.1mm x 15.3mm
Installation	Surface Mounted
Material	Aluminium
Length	2m or Custom cut lengths up to 2m
Finish	Anodised Aluminium/ Custom Power coated
Diffuser Material	PC
Accessories	Metal Mounting clips (2 per meter) and a pair of endcaps included
Warranty	5 Years



End Cap With hole
End Cap without hole



Mounting clip (metal)



PC Frosted Diffuser