

Lumoflex

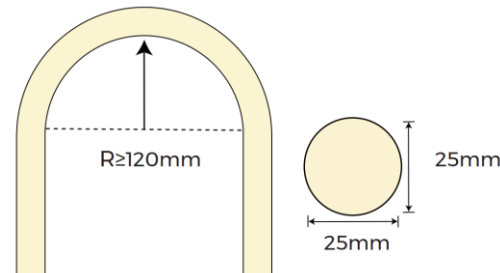
The 360° Lumoflex LED Strip is a cutting-edge lighting solution, offering 360-degree omnidirectional illumination for unparalleled versatility. Operating at 14.4W per meter, it delivers bright, consistent lighting, making it ideal for creative and decorative applications. With a maximum continuous run of 5 meters, Lumoflex is perfect for both residential and commercial projects that demand seamless, high-quality lighting.

FEATURES AND BENEFITS:

- ✓ High CRI 90
- ✓ 360° Omnidirectional Light
- ✓ Available in Constant Voltage 24V DC
- ✓ 334 LEDs per meter for smooth and seamless illumination.
- ✓ Maximum continuous run of 5 meters
- ✓ Available in 3000K and 4000K (other colour options able on request)
- ✓ Comes with IP65 rating
- ✓ Long Lifespan, rated for 36,000 hours (L70)
- ✓ 5-year warranty

APPLICATION:

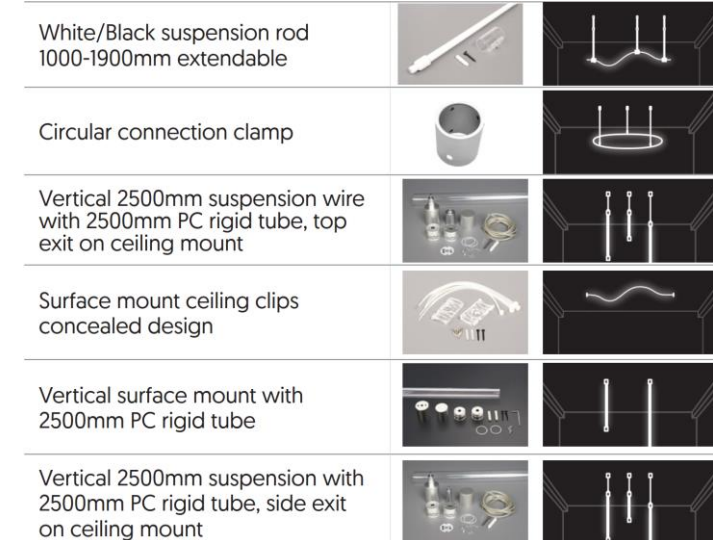
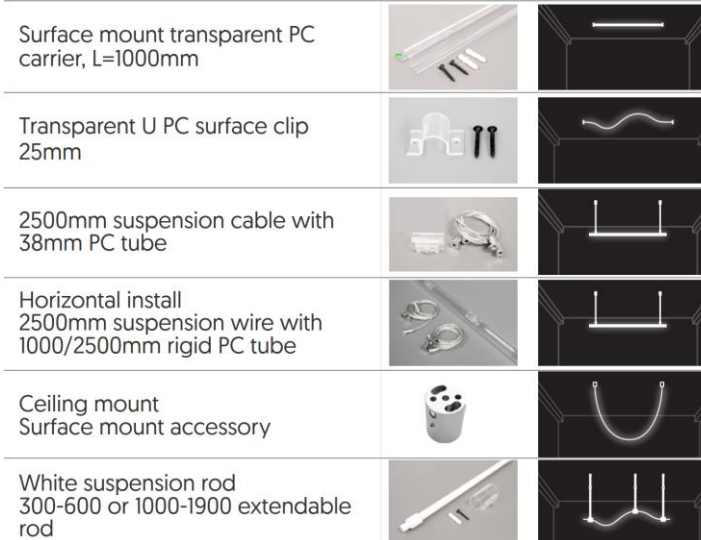
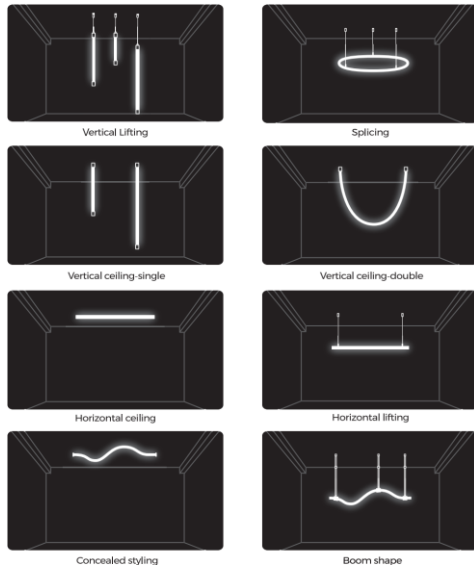
- ❖ Commercial lighting
- ❖ Architectural lighting
- ❖ Task lighting
- ❖ Cove and accent lighting
- ❖ Outdoor decorative lighting
- ❖ Custom lighting designs



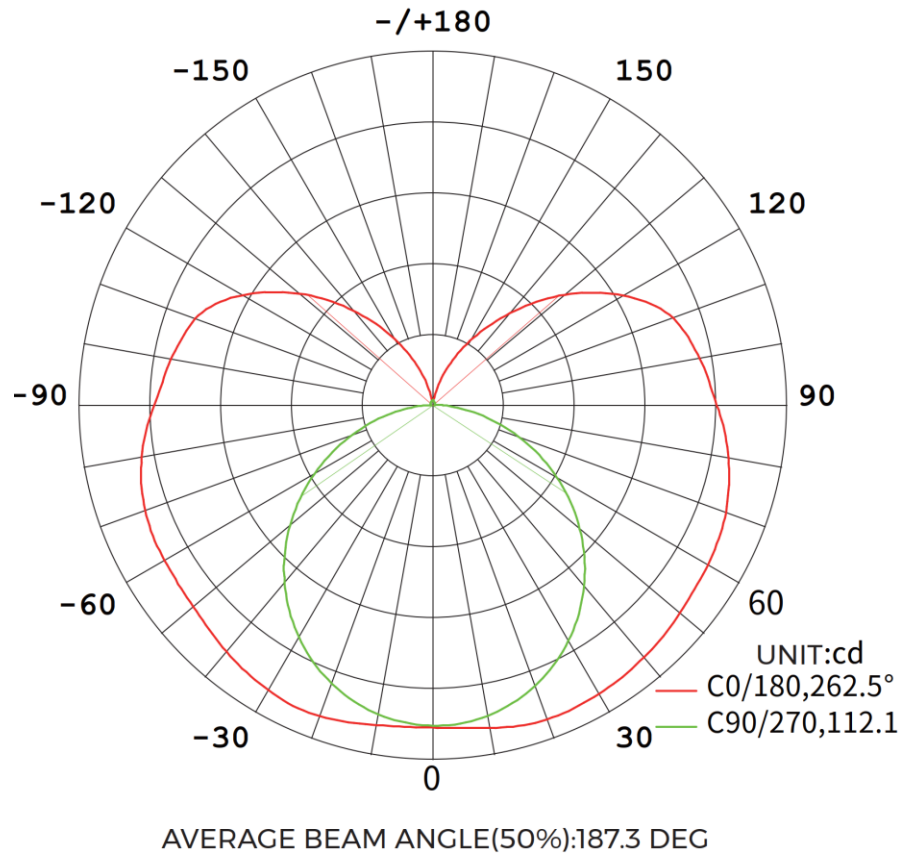
DATASHEET:

Azoogi Product Code	Input Voltage DC (V)	Max. Power per Meter (W/m)	Colour Temperature	Lumen (lm/m)	CRI	LEDs per Meter	Width (mm)	Cont. Max Run (mm)	Beam Angle	Cutting Increment	IP Rating	Operating Temperature	Warranty
LMF01	24V	14.4W/m	3000 K	950lm/m	Ra>90	334leds/m	25mm	5000mm	360°	Cut at any point	IP65	-20°C to +40°C	5 years
LMF02	24V	14.4W/m	4000 K	950lm/m	Ra>90	334leds/m	25mm	5000mm	360°	Cut at any point	IP65	-20°C to +40°C	5 years

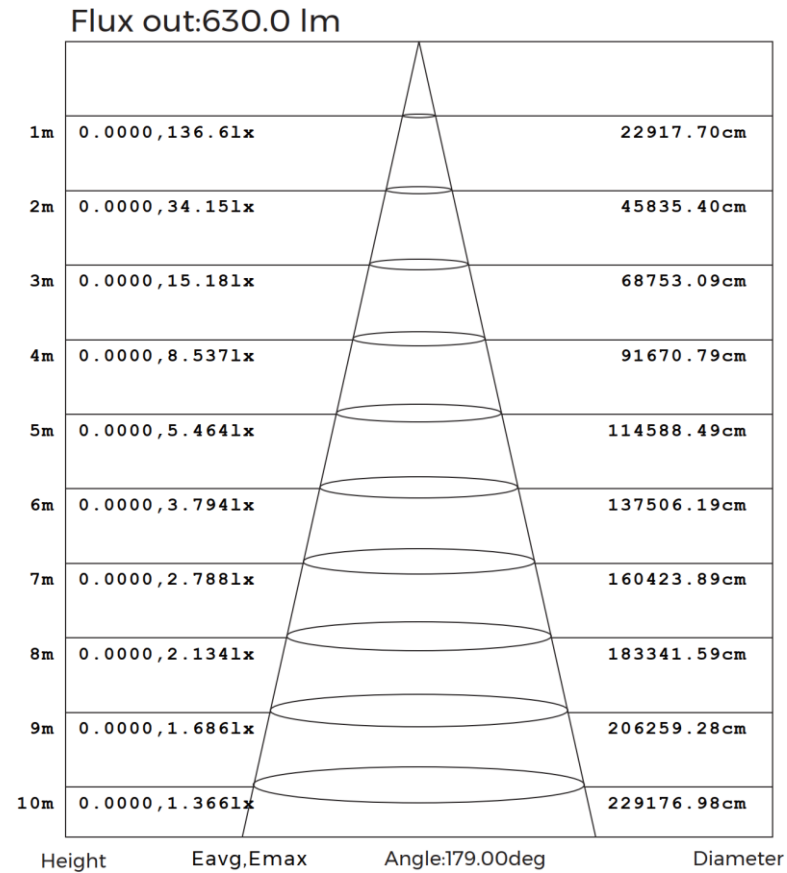
INSTALLATION ACCESSORIES:



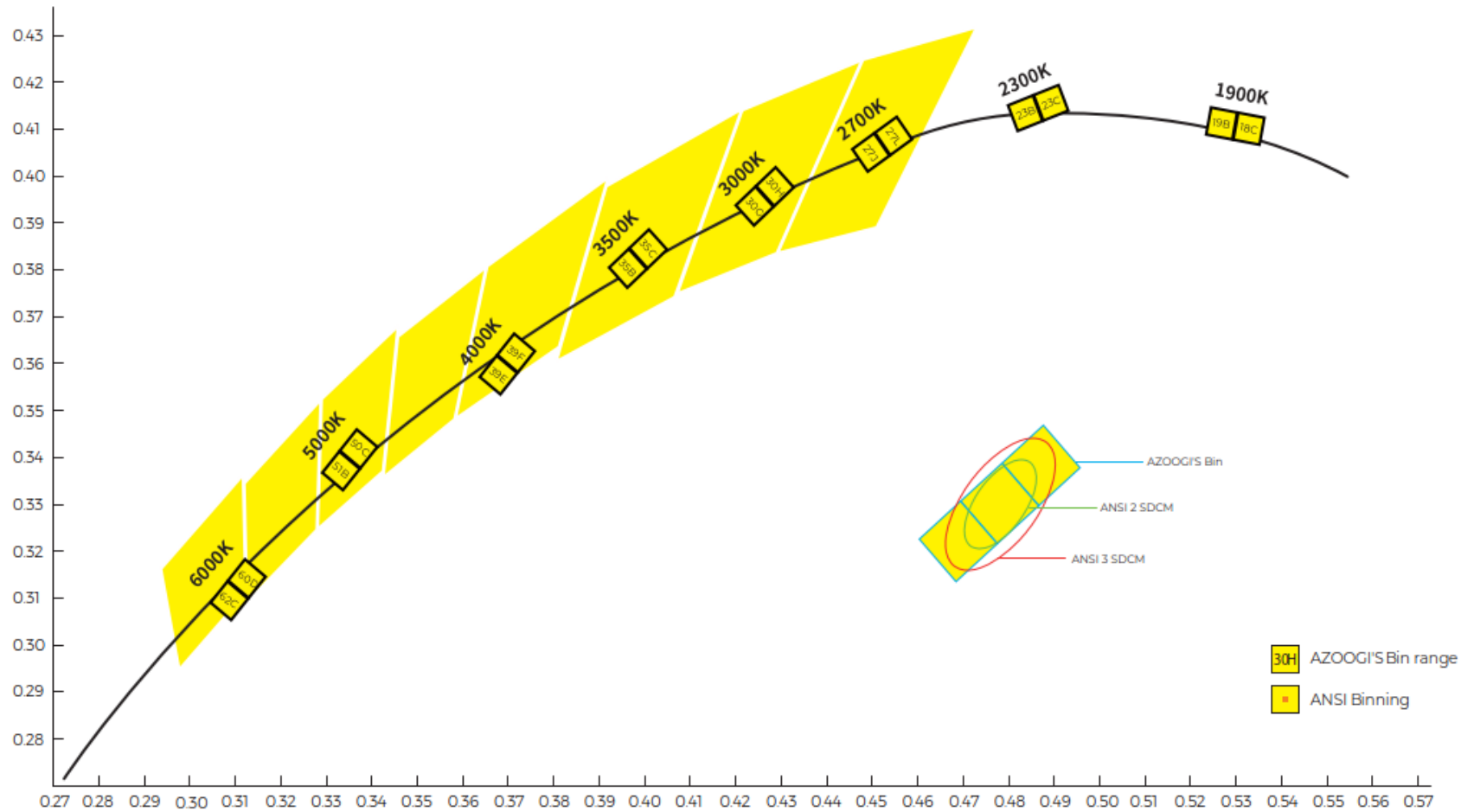
LUMINOUS INTENSITY DISTRIBUTION CURVE:



ILLUMINANCE AT A DISTANCE:

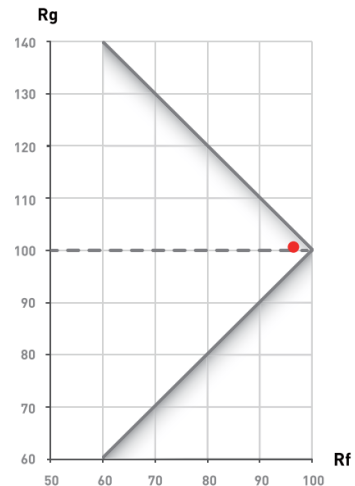
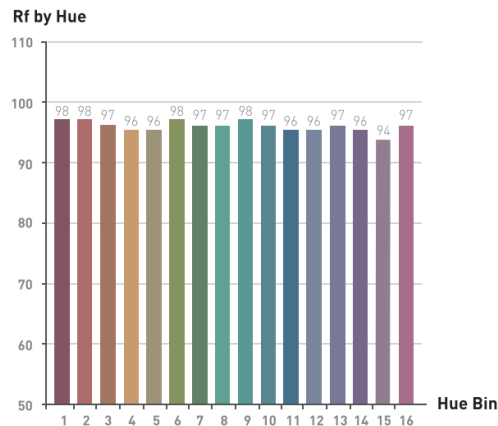
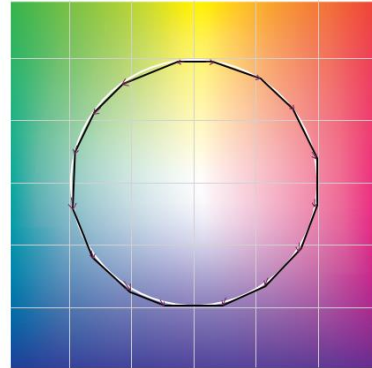
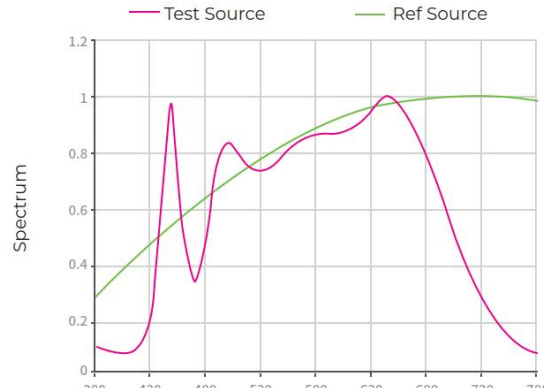


MACADAM ELLIPSES:

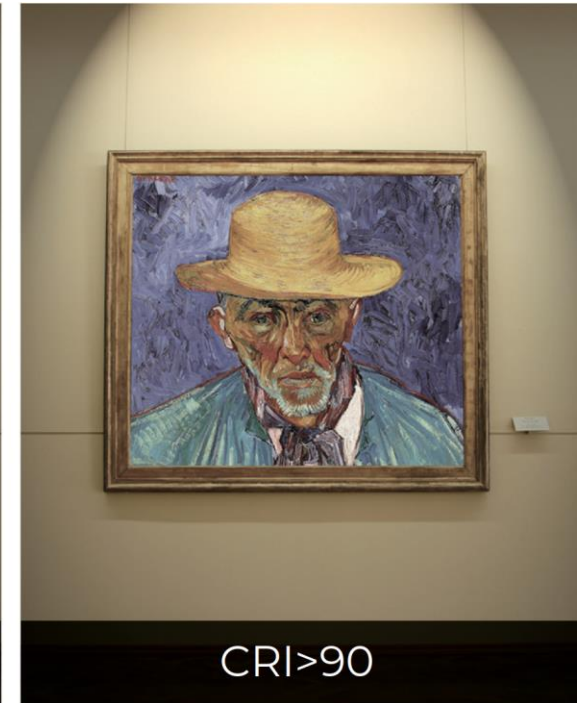
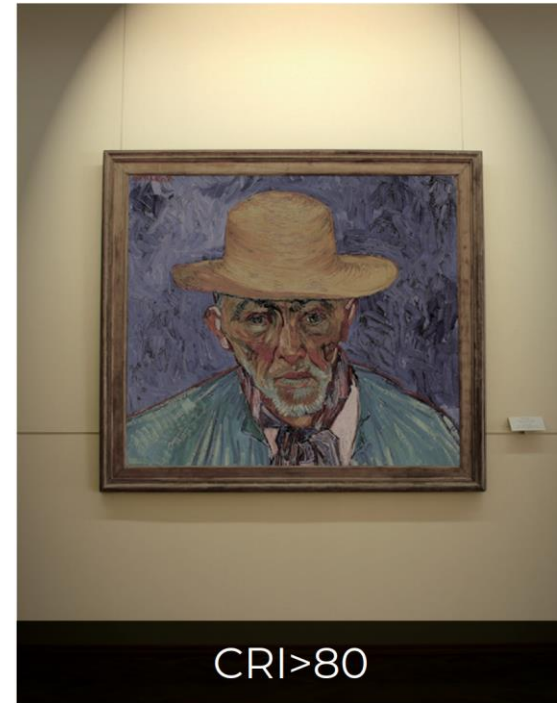


Complied with international ANSI standards, Azoogi divides every CCT into 2 or 3 bins, at 2-step MacAdam ellipse at least, to ensure customers get the same colour of light even for different orders.

TEST OF FULL SPECTRUM (FS) LED:



COLOR RENDITION (CRI):



All our LED strips are manufactured with a **CRI > 90**, ensuring superior color rendering for vibrant, true-to-life illumination. This high CRI rating enhances the richness and accuracy of colors, making them ideal for applications where color precision is essential, such as artwork displays, retail spaces, and interior designs. With our CRI > 90 LED strips, you can bring out the finest details and create visually stunning environments.

PRECAUTIONS FOR NEON LED STRIP INSTALLATION:

Use of Power Supply:

- ✓ Always use an isolated power supply to power the LED strip.
- ✓ Ensure the ripple of the constant voltage source is below 5% for stable performance.
- ✓ Avoid using resistance-capacitance step-down or non-isolated power supplies, as they may damage the strip.

Power Reserve:

- ✓ Reserve at least 20% power margin (use only 80% of the power capacity) to provide sufficient voltage and prevent overloading.

Safe Handling:

- ✓ Avoid touching the AC power terminal while connected to prevent electric shock.
- ✓ Pay attention to the correct polarity of the power connections (positive and negative terminals) to prevent damage.

Installation Care:

- ✓ Prevent scratching, twisting, or irregular bending of the LED strip during installation, as this may cause irreparable damage.
- ✓ Maintain a bending radius of no less than 60mm. A smaller radius may damage the strip.
- ✓ Do not stretch or distort the product excessively.

Length Restrictions:

- ✓ Ensure the total length of the strip does not exceed the maximum specified length, as this can cause overheating, uneven brightness, and product failure.

Eye Protection:

- ✓ Avoid prolonged exposure to the light-emitting surface to prevent eye strain or discomfort.

Professional Installation:

- ✓ Non-professionals should refrain from installing, disassembling, or repairing the product.

Adhesives:

- ✓ Do not use acidic or alkaline adhesives (e.g., glass glue) for mounting. Use only silicone-based adhesives for bonding to prevent chemical reactions and ensure durability.

Waterproofing and IP Ratings:

- ✓ IP67-rated products are not suitable for underwater use in swimming pools.
- ✓ After cutting IP67 products, waterproofing must be re-applied, and the protection level may reduce.

Environmental Conditions:

- ✓ Avoid installing different strips with similar CCT values in the same setup, as slight color deviations may occur due to structural differences.
- ✓ Install in the same environmental conditions to prevent inconsistent color changes caused by exposure or environmental factors.

Storage and Sealing:

- ✓ Properly seal cut sections to prevent exposure to organic chemicals such as aldehydes or benzenes.
- ✓ Store unused products in sealed packaging to maintain their quality.

Solder Points:

- ✓ A maximum of two soldering points per reel (5m) is allowed during production to ensure product consistency.

Material Properties:

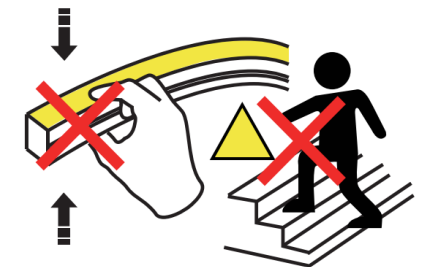
- ✓ Slight color changes in the silicone material may occur over time due to environmental exposure. This is normal and does not affect performance.
- ✓ By following these precautions, you ensure safe handling, optimal performance, and long-lasting reliability of the neon LED strips.



No stretching



No distortion



No trampling