

# PR127 (Concord)

PR127 or Concord profile is a professional-grade lighting channel designed to accommodate high-performance LED modules. This profile is ideal for creating bold, large-scale linear lighting solutions. Constructed from premium extruded aluminium, it ensures durability, excellent heat dissipation, and a sleek appearance, making it suitable for a variety of architectural and commercial projects

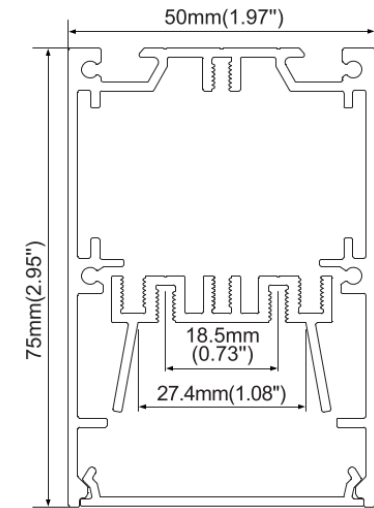
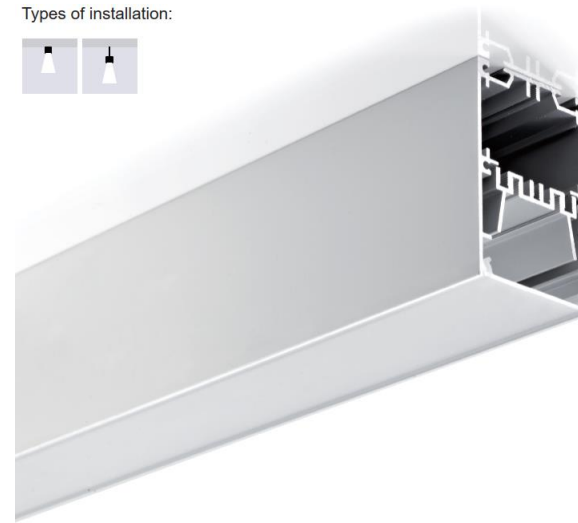
## Applications:

- ✓ Architectural Lighting
- ✓ Retail Displays
- ✓ Residential Spaces
- ✓ Commercial Projects

## Datasheet:

<b>Product Code</b>	<b>PR127 (Concord)</b>
<b>Dimensions</b>	50mm x 75mm
<b>Installation</b>	Surface Mounted / Suspended
<b>Material</b>	Aluminium
<b>Length</b>	3m or Custom cut lengths up to 3m Multiple lengths can be connected to make longer lengths (Tongue and Groove)
<b>Finish</b>	Anodised Aluminium / Black / Custom Power coated
<b>Diffuser Material</b>	PC
<b>Accessories</b>	Metal Mounting clips (2 per meter), a pair of endcaps included and steel wire (2 per meter)
<b>Warranty</b>	5 Years

Types of installation:



End Cap With hole  
End Cap without hole



Steel Wire



180 deg Connector



PC Frosted Diffuser



Mounting clip (metal)



Internal Clips

## Installation Steps:

### Marking Suspension Points:

- Identify and mark the positions for suspension kits on the ceiling.
- Install suspension cables at intervals of at least 1 meter. For example, a 2-meter Concord housing requires three suspension cables.
- For joined Concord housings, ensure suspension cables are placed on both sides of the joint.
- Drill holes at the marked points, ensuring the drill size matches the wall plugs provided in the suspension kit.

### Assembling and Installing Suspension Kits

- Refer to Figure 1 for assembling the suspension kit.
- Secure the suspension kit to the ceiling using the provided screws.
- Suspend the housing at the desired height, cutting off any excess cable length.

### Connecting Housing Segments

- Use 180° brackets to connect adjacent housing segments, as shown in Figure 2.
- Ensure the ends of the housings being joined have matching alphabet labels.
- If any gaps remain between segments, fill them with silicone adhesive matching the housing's colour.

### Mounting the Internal Tray

- Attach tray clips to the internal tray (one tray clip per meter is recommended).
- Mount the tray inside the housing securely (see Figure 3).



Figure 1: Steps for assembling suspension kit

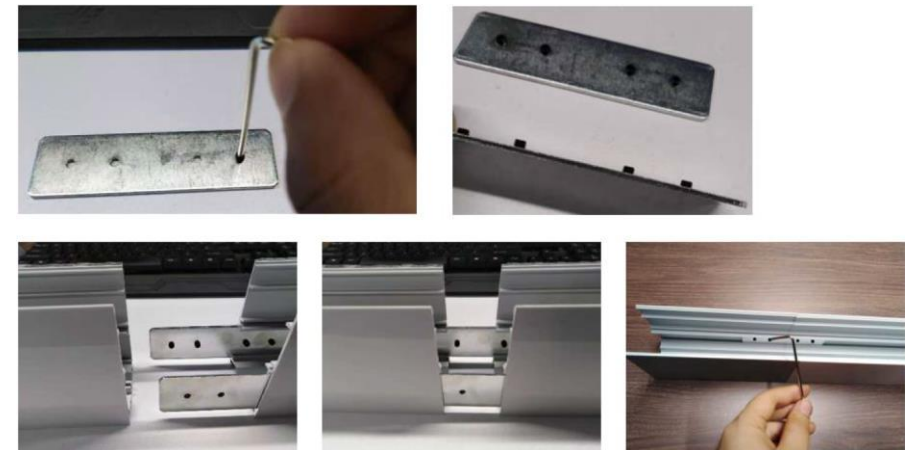


Figure 2: Steps for connecting two housing using 180 deg brackets

## Attaching LED Strips

- Attach two LED strips to each tray, as illustrated in Figure 4.
- Avoid mishandling LED strips—do not twist, sharply bend, or apply excessive tension. Mishandling voids the LED strip warranty.

## Routing LED Strip Tails

- Guide the LED strip tails through the designated holes on the housing's back.
- Route them along the grooves on the housing and down the nearest suspension cables.

## Installing LED Drivers

- Mount the LED drivers remotely, outside the light fitting.
- Connecting LED Strips to Drivers
- Wire the LED strip tails to the driver.
- Connect the grey wire to the driver's positive terminal and the wire with a black band to the negative terminal.

## Fixing the Diffuser

- Secure the diffuser to the housing as shown in Figure 5.
- Remove any protective plastic from the diffuser surface.

## Powering On

- Connect the driver to the mains and switch on the power.
- Verify the light turns on successfully.

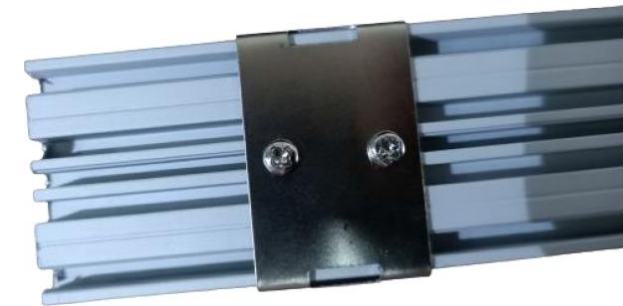


Figure 3: Tray clip mounted on internal tray



Internal  
Trimless Clip

Figure 4: Internal tray with LED strips mounted to the housing



Figure 5: Diffuser fixed on the housing